

單位 unit: mm

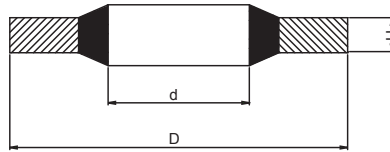
CNL 編號 Parts No.	螺紋直徑 Thread DIA.	內徑 d	外徑 D	高度 H
BS-201	3.5	4.1	7.2	1
BS-202	4	4.5	7	1
BS-203	5	5.7	9	1
BS-204	5	5.7	10	1
BS-205	5.5	6.2	9.2	1
BS-206	6	6.7	10	1
BS-207	6	6.7	11	1
BS-208	6	6.7	11	2.5
BS-209	6.5	7.1	12	1
BS-210	6.7	7.3	10.2	1
BS-211	8	8.5	13.4	1
BS-212	8	8.7	13	1
BS-213	8	8.7	14	1
BS-214	8	8.7	16	1
BS-215	8.5	9.3	13.3	1
BS-216	10	10.35	16	2
BS-217	10	10.7	16	1.5
BS-218	10	10.7	18	1.5
BS-219	11	11.4	16.3	1.5
BS-220	11	11.8	18.5	1.5
BS-221	11	11.8	19.1	1.5
BS-222	12	12.7	18	1.5
BS-223	12	12.7	20	1.5
BS-224	13	13.7	20	1.5
BS-225	13	13.7	22	1.5
BS-226	13.5	14	18.7	1.5
BS-227	14	14.7	22	1.5
BS-228	15	16	22.7	1.5

CNL 編號 Parts No.	螺紋直徑 Thread DIA.	內徑 d	外徑 D	高度 H
BS-229	16	16.7	24	1.5
BS-230	17	17.4	24	1.5
BS-231	17.5	18	24.7	1.5
BS-232	18	18.7	26	1.5
BS-233	20	20.7	28	1.5
BS-234	21	21.5	28.7	2.5
BS-235	22	22.5	28	1.5
BS-236	22	22.7	30	2
BS-237	22	22.7	30	3
BS-238	24	24.7	32	2
BS-239	26	26.7	35	2
BS-240	27	27.2	36	2
BS-241	28	28.7	37	2
BS-242	30	31	39	2
BS-243	33	33.7	42	2
BS-244	33	34.3	43	2
BS-245	36	36.7	46	2
BS-246	39	40	51	2.5
BS-247	42	42.7	53	3
BS-248	48	48.7	59	3
BS-249	51	52	60	3
BS-250	52	53.3	64.5	3
BS-251	60	60.7	73	3
BS-252	68	68.6	79.5	3.5
BS-253	75	76.08	90.3	3.5
BS-254	88	89.09	101.48	3.2
BS-255	125	127	143.67	5

油封

* 產品陸續推出中，請先來電洽詢
Size increasing, please call for checking.





單位 unit: mm

CNL 編號 Parts No.	螺紋直徑 Thread DIA.	內徑 d	外徑 D	高度 H
BS-301	3	3.6	7.5	1
BS-302	4	4.6	9	1
BS-303	5	5.6	10	1
BS-304	6	6.6	11	1
BS-305	6	6.85	13.27	1.3
BS-306	6	7	11.4	1
BS-307	8	8.6	13	1
BS-310	10	10.7	17	1.5
BS-312	11	11.8	18.1	1.5
BS-313	12	12.7	19	1.5
BS-315	13	13.8	20.1	1.5
BS-316	14	14.7	21	1.5
BS-317	16	16.7	23	1.5
BS-319	16.5	17.2	23.9	2
BS-320	18	18.7	27	2
BS-321	20	20.7	29	2
BS-324	22	22.7	31	2
BS-325	23	23.7	32	2
BS-326	24	24.7	33	2
BS-327	26	27	35.3	2
BS-328	27	27.7	36	2
BS-329	28	28.6	36	2
BS-330	28.5	29.2	37.5	2
BS-331	30	30.7	39	2
BS-332	33	33.7	42	2
BS-333	36	37	48	2.5
BS-334	39	40	51	2.5
BS-335	42	43	54	2.5
BS-336	45	46	57	2.5
BS-337	48	49	60	2.5

CNL 編號 Parts No.	螺紋直徑 Thread DIA.	內徑 d	外徑 D	高度 H
BS-510	1/8	10.4	14.7	1.2
BS-511	1/4	13.85	18.7	1.2
BS-512	3/8	17.35	22.7	1.2
BS-513	1/2	21.65	26.7	1.2
BS-514	3/4	27.3	32.5	1.2
BS-515	1	34.2	39.5	2
BS-516	1 1/4	42.8	49.5	2
BS-517	1 1/2	48.7	55.5	2
BS-518	2	60.5	68.5	2
BS-519	1 1/16	8.3	12.7	1.2
BS-520		27.3	32.6	2



* 產品陸續推出中，請先來電洽詢
Size increasing, please call for checking.